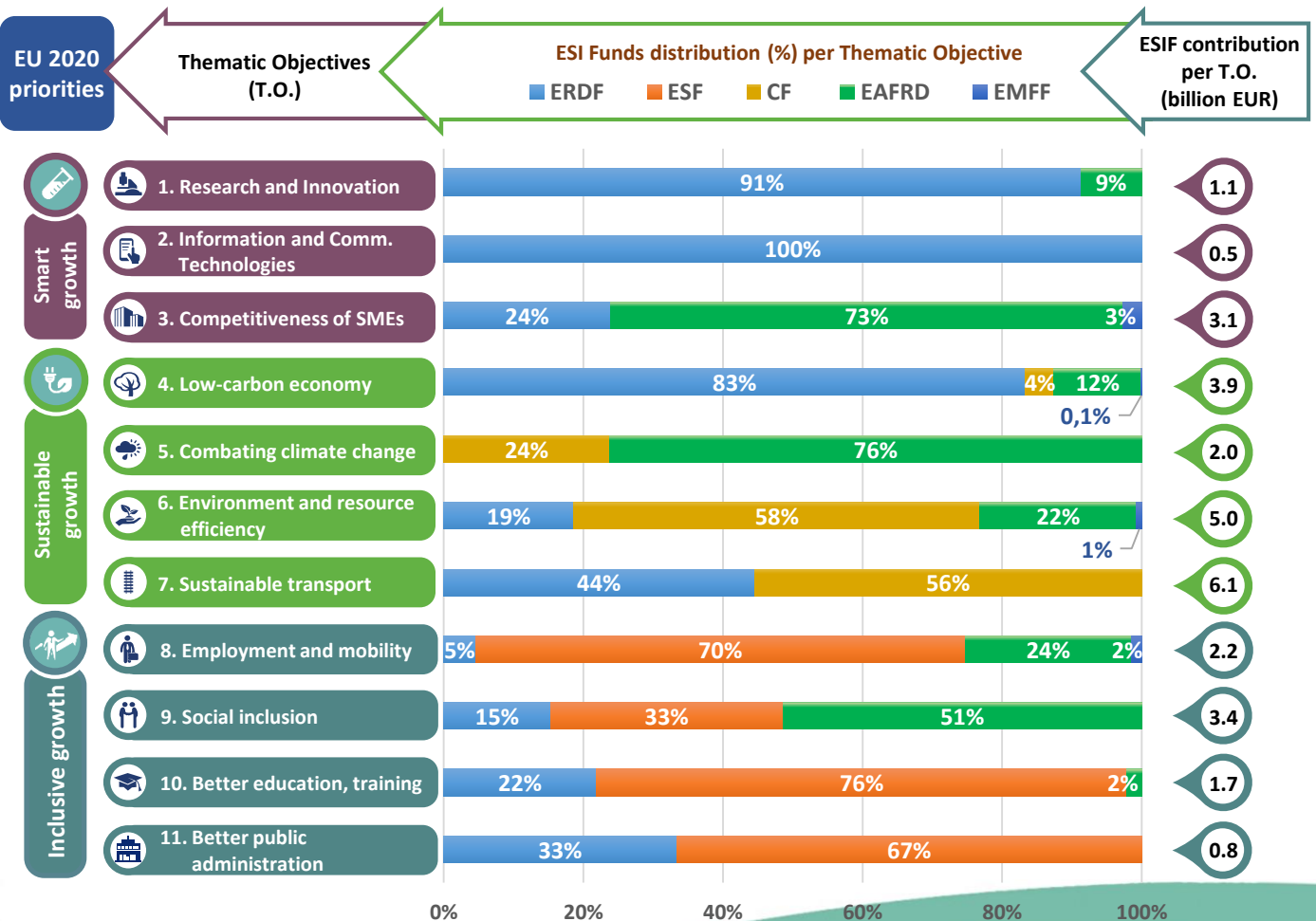
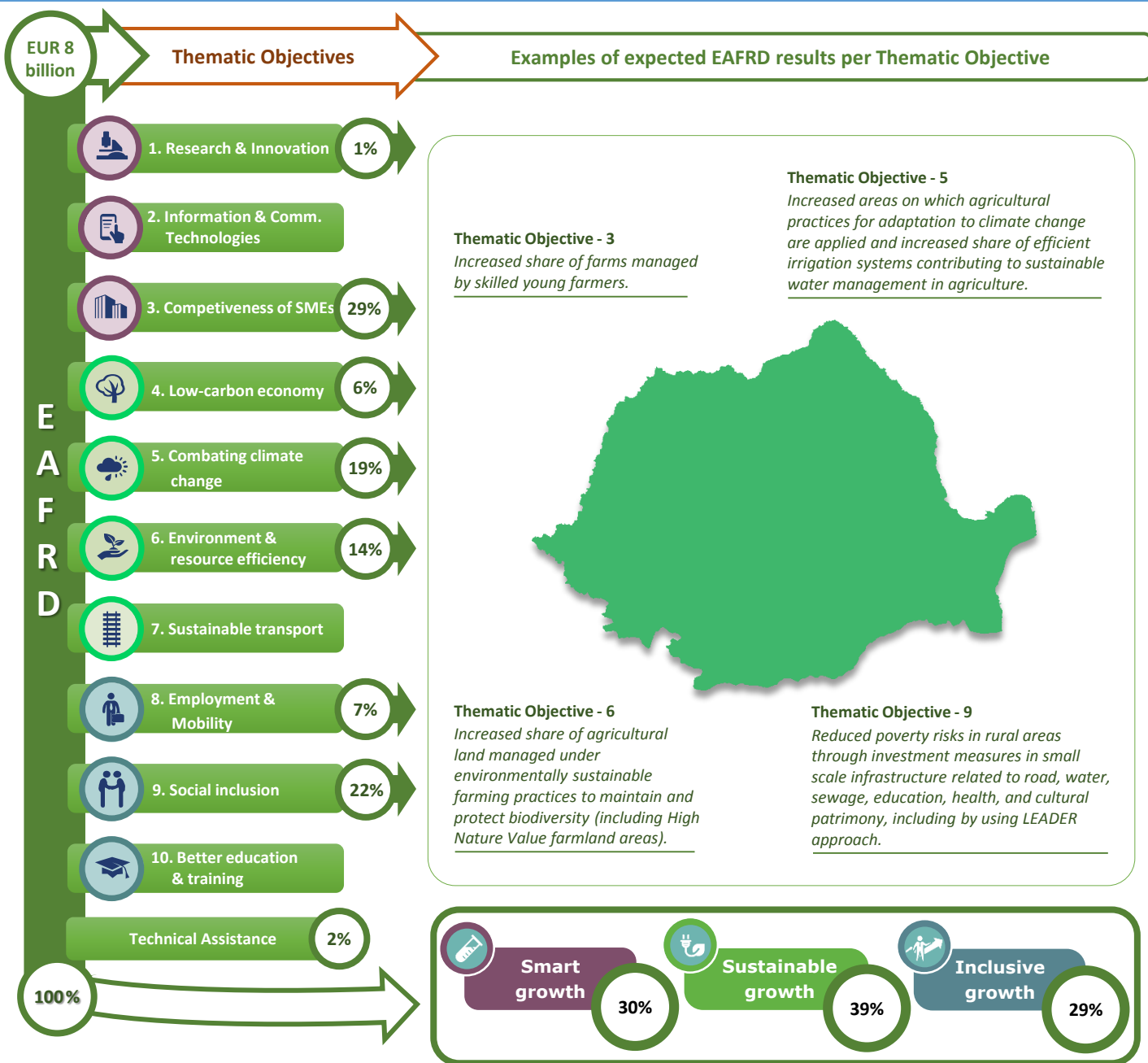


Thematic objectives supported in Romania and ESIF contributions



EAFRD allocation per Thematic Objective & expected results



Integrated approaches to territorial development in rural areas

Community Led Local Development (CLLD) / LEADER

CLLD/LEADER funding in Romania: Maximum 7% of the total EAFRD budget.

Multi-funded Local Development Strategies: Possibly will apply mono fund financing taking into consideration the institutional capacity and relatively early stages of implementation of local development strategies.

Rural-area population limit derogations: In the Danube Delta Region, a minimum ceiling of 5 000 inhabitants will be accepted due to low population density.

Integrated Territorial Investments (ITI)

ITI in Romania: An ITI is envisaged for the Danube Delta Biosphere Reserve. Indicative allocation by ESI fund:

- ERDF - EUR 709.62 million
- ESF - EUR 76 million
- CF - EUR 107.64 million
- EAFRD - EUR 168 million
- EMFF - EUR 50 million

Coordination body: Inter-institutional Committee for the Partnership Agreement (CIAP)

Date of PA approval: 06/08/2014

Please note: The data and figures presented in this summary come from the European Commission approved version of the PA for Romania. The information provided in this summary should not be considered a comprehensive account of the original PA content. For the full information please see the original document.

For more information please visit: http://ec.europa.eu/contracts_grants/agreements/index_en.htm